

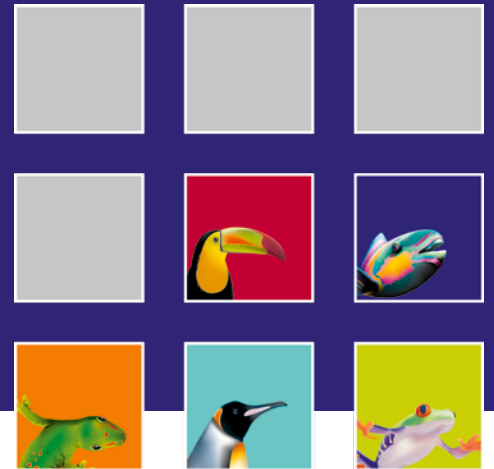


KONICA MINOLTA



Colibri®

One software platform for the global color supply chain



10 reasons that will determine your choice:

- 1 Predicts precise colour recipes for opaque, translucent and transparent colours
- 2 Corrects recipes accurately saving time and resources
- 3 Includes an expert system to select recipes according to performance requirements
- 4 Allows use of leftover and recycled materials helping to reduce costs
- 5 Simplifies workflows with pre-defined templates
- 6 Displays colour collections and recipes in 3D View
- 7 Modular in design and add Add-ons can be combined individually
- 8 Offers high availability across on-premise and cloud environments
- 9 Takes advantage of a modern software architecture and innovative technology
- 10 Offers the possibility to connect to 3rd-party software such as Enterprise Resource Planning (ERP) solutions

10 Companies of world-wide reputation which already have made their choice!



Konica Minolta Sensing is a distributor of matchmycolor LLC for software and services.

Kolibri® is a registered trademark of matchmycolor LLC; Microsoft®, Windows® 7 and Windows® 8 are registered trademarks of Microsoft Corporation.



KONICA MINOLTA, INC
Konica Minolta Sensing Americas, Inc.
Konica Minolta Sensing Europe B.V.

Osaka, Japan
New Jersey, U.S.A.
European Headquarter/BENELUX
German Office
French Office
UK Office
Italian Office
Swiss Office
Polish Office
Belgium Office
Nordic Office
SE Sales Division
Beijing Office
Guangzhou Office
Chongqing Office
Qingdao Office
Wuhan Office

Konica Minolta (CHINA) Investment Ltd.

Konica Minolta Sensing Singapore Pte Ltd.
Konica Minolta Sensing, Inc.

Optics Company, Korea
Optics Company, Sensing Business
Thailand Representative Office

Phone: 888-473-2656 (in USA), 201-236-4300 (outside USA),

Nieuwegein, Netherland
München, Germany
Roissy CDG, France
Warrington, United Kingdom
Cinisello Balsamo, Italy
Dietlikon, Switzerland
Wroclaw, Poland
Zaventem, Belgium
Västra Frölunda, Sweden
Shanghai, China
Beijing, China
Guangzhou, China
Chongqing, China
Shandong, China
Hubei, China
Singapore
Goyang-si, Korea
Bangkok, Thailand

Phone: +31 (0) 30 248-1193
Phone: +49 (0) 89 4357 156 0
Phone: +33 (0) 1 80-11 10 70
Phone: +44 (0) 1925 467300
Phone: +39 028 49488.00
Phone: +41 (0) 43 322-9800
Phone: +48 (0) 71 734 52-11
Phone: +32 (0) 2 7170-933
Phone: +46 (0) 31 7099464
Phone: +86-(0) 21-5489 0202
Phone: +86-(0) 10-8522 1551
Phone: +86-(0) 20-3826 4220
Phone: +86-(0) 23-6773 4988
Phone: +86-(0) 532-8079 1871
Phone: +86-(0) 27-8544 9942
Phone: +65 6563-5533
Phone: +82 (0) 2-523-9726
Phone: +66-2361-3730

Fax: 201-785-2482
Fax: +31 (0) 30 248-1280
Fax: +49 (0) 89 4357 156 99
Fax: +33 (0) 1 80 11 10 82
Fax: +44 (0) 1925 711143
Fax: +39 02849488.30
Fax: +41 (0) 43 322-9809
Fax: +48 (0) 71 734 52 10
Fax: +32(0)2 7170-977
Fax: +86-(0) 21-5489 0005
Fax: +86-(0) 10-8522 1241
Fax: +86-(0) 20-3826 4223
Fax: +86-(0) 23-6773 4799
Fax: +86-(0) 532-8079 1873
Fax: +86-(0) 27-8544 9991
Fax: +65 6563-9721
Fax: +82 (0) 31-995-6511
Fax: +66-2361-3771